



# **STONE DOCTORS**

**Providing products  
to solve all your  
hard surface problems.**

[www.stonedoctors.ie](http://www.stonedoctors.ie)

[www.stonedoctors.co.uk](http://www.stonedoctors.co.uk)

# Contents

## PROFESSIONAL SEALERS

**Platinum Stone Sealer**  
**Slate Sealer**  
**Colour Intensifier**  
**Aerosol Spray Sealer**  
**Porcelain Protector**  
**Paver Plus**

## RESTORATION PRODUCTS

**Grout 2 New**  
**Grout 2 New Pre Treat Cleaner**  
**Rejuvenator Spray**  
**Tarmac Restorer**  
**Wax Wash**  
**Step-Safe**

## PROFESSIONAL CLEANERS

**Black Spot Remover**  
**Cement Away**  
**Green To Clean**  
**All In One Outdoor Cleaner**  
**Heavy Duty Grime Remover**  
**Limex Spray**  
**Mould Away**  
**Multi Clean**  
**Oil Spot Remover**  
**Power Stripper Plus**  
**Rust Off**

## ADHESIVES AND ACCESSORIES

**MSP 600 Adhesive**  
**Backer Rod**  
**Rubber Squeegee**  
**Watering Can with Rose Attachment**  
**Paint Roller with Tray**  
**Knapsack Sparyer**

# PROFESSIONAL Sealers

## PLATINIUM STONE SEALER

Available in 1 Litre & 5 Litre

Platinum Stone Sealer is a standard impregnating sealer for natural stone. Can be used on interior and exterior surfaces, is solvent free and it retains existing colour and finish of treated stone or brick.

### COVERAGE RATE

10 to 15sqm per litre depending on porosity of the stone.



## SLATE SEALER

Available in 1 Litre

Slate Sealer gives a long lasting gloss coating to internal slate floors. It intensifies the natural stone colours and is suitable for internal. It can also be used on other natural stones but will change the look and slip resistance of these materials especially if used externally.

*\*Suitable for Internal Use Only*

### COVERAGE RATE

Up to 20sqm per litre depending on porosity of the stone.



# PROFESSIONAL Sealers

## COLOUR INTENSIFIER

Available in 1 Litre & 5 Litre

Colour Intensifier is a solvent based impregnating colour enhancer and sealer for porous stone. It's a one step colour intensifier and impregnator which enhances natural colours and texture. Suitable for internal and external use.

### COVERAGE RATE

15 to 25sqm per litre depending on porosity of the stone.



## AEROSOL SPRAY SEALER

Available in 600ml can

A DIY spray sealer ideal for sealing grout lines for tiles, walls and floors. Provides long term protection, is non-yellowing and won't change the appearance of the applied surface. Can be applied to damp grout immediately after installation.

### COVERAGE RATE

Up to 30sqm of grout lines depending on width of the joint.



# PROFESSIONAL Sealers

## PORCELAIN PROTECTOR

Available in 1 Litre

Developed to increase the stain resistant property of porcelain paving/tiling. Will not change the look or slip resistance of the material as it is a super impregnating treatment. Can be used for interior and exterior projects making the porcelain product easier to clean and maintain.

### COVERAGE RATE

Up to 40sqm per litre depending on porosity of the tile.



## PAVER PLUS

Available in 5 Litre and 25 Litre containers

PaverPlus is a high performance outdoor sealer for paving, driveways and paths. The treated surface will have a matt finish and the natural colours of the concrete paving will be enhanced.

PaverPlus creates a high quality stain protection that helps to prevent water, oil and dirt from penetrating into the surface, making it easier to clean and maintain.

- Suitable for new and existing concrete and clay block paving.
- Stabilises the jointing sand and enhances the appearance of the paving.
- Inhibits weed growth and protects against oil staining.
- Excellent resistance to UV damage and moisture clouding.



### COVERAGE RATE

3 to 6sqm per litre depending on the size of the paving block/slab.

## GROUT 2 NEW

Available in 237ml bottles

Innovative product that re-colours and seals existing/new grout, it impregnates deep into the grout for long lasting protection, and brings your tired grout back looking like new.

Comes in the following colours only:

- White
- Beige
- Tan Brown
- Mushroom Brown
- Ivory
- Grey
- Black



## GROUT 2 NEW PRE-TREAT CLEANER

Available in 500ml

Special pre treat cleaner before application of our Grout 2 New colour sealer. Cleans the old tired grout and opens the pores of the grout helping the colour sealer to penetrate deep into the grout for maximum long lasting protection.



## REJUVENATOR SPRAY

Available in 500ml bottle

This is a rejuvenating spray for cleaning and protecting stone counter tops, vanity units and fireplace hearths. Can also be used on engineered quartz and polished concrete counter tops.



## TARMAC RESTORER

Available in 25 Litre

Professional grade tarmacadam sealer and colour restorer comes in standard black only. Easy to apply and will bring your old tired tarmac back to life and uniform any inconsistency in colour. As it is also a sealer it makes ongoing cleaning easier.



## WAX WASH

Available in 1 Litre

Wax Wash cleans and brings a shine up on dull floors. This cleaner can be used on a multitude of surfaces ideal for terracotta, travertine, limestone and all types of natural stone to rejuvenate and renew the surface.



## STEP-SAFE

Available in 1 Litre

Permanent anti-slip treatment for tiles. For use on ceramic, porcelain, natural stone floors & showers. Improves slip resistance on wet floors. Long-term slip-fall accident protection.





## BLACK SPOT REMOVER

Available in 5 Litre

Heavy duty version of our All In One Outdoor Cleaner, apply neat onto stubborn deep black spots that may still be visible after cleaning with All In One. Leave to work overnight and then rinse with clean water. Used also on old headstones to remove deep rooted white lichen stains.



## CEMENT AWAY

Available in 1 Litre & 5 Litre

This is a grout residue and cement stain remover for non acid sensitive material. Can be used on acid resistant surfaces such as ceramic and non polished porcelain. This product is also effective in removing natural occurring efflorescence from various natural surfaces. Suitable for internal and external use.



## GREEN TO CLEAN

Available in 5 Litre

Environmentally friendly, biodegradable cleaner with self-cleaning innovative technology. Simply dilute with water and spray onto any porous building material i.e. natural stone, concrete, render, timber decking, brick, driveway and walls and also safe to use on tarmac. Ensure the material being treated is dry with no rain forecast for at least 6 hours after treatment, then be amazed within a few days/up to max a couple of weeks all your green/red algae stains will disappear and product stays active in your material for up to 9 months. No need to power wash your driveway anymore just spray and walk away.



## ALL IN ONE OUTDOOR CLEANER

Available in 5 Litre

This All in One Cleaner\* is a fast acting moss, algae and lichen stain remover for use on all external paving material including natural stone and concrete. It is an industrial strength cleaner that can be diluted down for extended coverage rates.

*\*Not Suitable for Tarmac*



## HEAVY DUTY GRIME REMOVER

Available in 1 Litre

Non acidic, heavy duty grime remover suitable for use on most materials including natural stone and ceramic tiles\*. Highly effective, it dissolves and removes ingrained dirt, wax films, grease and oil.

*\*Suitable for Internal Use Only*



## LIMEX SPRAY

Available in 500ml bottle

This product removes limescale and water marks from shower cubicles and other surfaces. Suitable for: ceramic and porcelain tiles. Not recommended for use on acid sensitive natural stone, i.e. marble, limestone.



## MOULD AWAY

Available in 500ml bottle

Mould Away removes mould and mildew stains from most tiles and grout.

Recommended for use internally, fast acting and long lasting formula.



## MULTI CLEAN

Available in 1 Litre

Multi Clean is a PH neutral ongoing maintenance cleaner, which makes up to 50 litres of cleaner. For use on all surfaces including ceramic and porcelain tiles. Ideal as an everyday general purpose internal floor cleaner that can bring back the shine on polished tile surfaces and kills all household germs including MRSA and Ecoli.



## OIL SPOT REMOVER

Available in 500ml bottle

An easy spray on application fast acting oil patch remover suitable for all porous surfaces i.e. natural stone and concrete.

*Effective at removing stains like:*

- Motor Oil
- Hydraulic Oil

Repeat application may be required for optimum results.



## POWER STRIPPER PLUS

Available in 1 Litre

This is a heavy duty stripper for removing coatings and waxes from tiles and stone. It's an effective fast acting formula\* which emulsifies several layers of wax and polish in one application. Also suitable for removing tar/paint and glue stains from most porous building materials.

*\*New Improved Gel Formula*



## RUST OFF

Available in 1 Litre

This is a PH neutral formula\* which is suitable for cleaning all types of natural stone, ceramic and porcelain tiles. Removes rust and rust discolouration from acid sensitive stone. Suitable for internal and external use.

*\*New Improved Gel Formula*



## MSP 600 ADHESIVE

Available in 290ml tube

High Performance gun grade mastic developed for natural stone exterior and interior projects. Excellent as a jointing solution colour matched to the specific natural stone. Stain resistant, will not shrink or sag and joints will stay permanently flexible, is also an extremely good adhesive, high initial grab will stick virtually anything to anything.

Comes in the following colours

- Clear Crystal
- White Carrera
- Ivory Marfil
- Silver/Grey Granite
- Blue Limestone
- Grey Concrete
- Brown Emperador
- Black Basalt



## BACKER ROD

Commercial grade backer rod filler for expansion joints prior to application of MSP 600 adhesive.



## RUBBER SQUEEGEE

Commercial grade with heavy duty rubbers ideal for distribution of Paver Plus block paving treatment evenly across the surface of the material.



## WATERING CAN WITH ROSE ATTACHMENT

Ideal for application of Paver Plus paving treatment.





## PAINT ROLLER WITH TRAY

Standard roller for application of all other sealers/treatment products onto exterior paving or interior tiling.



## KNAPSACK SPRAYER

Standard sprayer ideal for application of sealers/treatment products onto exterior vertical surfaces. Also suitable for application of our Green to Clean cleaning product.



# BEFORE & AFTER

What to expect...

---

## ALL IN ONE OUTDOOR CLEANER



Before



After

---

## GROUT 2 NEW



Before



After

---

## COLOUR INTENSIFIER



Before

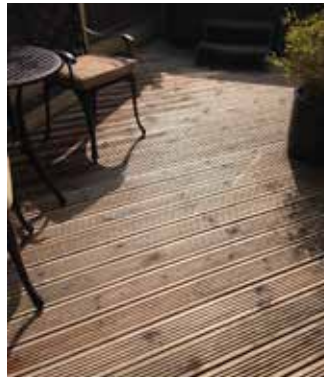


After

## GARDEN FURNITURE



## TIMBER DECKING



## PAVING





**Contact Us:**

Ireland Office: 00353 (0)1 813 8714

UK Office: 0044 (0) 333 241 2501

Email: [info@stonedoctors.co.uk](mailto:info@stonedoctors.co.uk)

[www.stonedoctors.co.uk](http://www.stonedoctors.co.uk)

[www.stonedoctors.ie](http://www.stonedoctors.ie)